

Welcoming Wall at Birmingham New Street Station

We're pleased to announce that our first living wall for Network Rail has now arrived at Birmingham New Street Station

20TH JUNE 2019 | BY MIRIAMME ROSE



With a length of 84 metres, you can't miss the welcoming, new stretch of Biotecture living wall outside Birmingham New Street Station. This is our first living wall project on a Network Rail train station, which started in August 2018 and was completed in May 2019. The living wall creates a pleasant promenade of calming, green infrastructure amongst this built urban environment. At 336 square metres, the wall is made up of approximately 16,634 plants. Ten different plant species were used including America Maritima Alba, Hedera Helix Wonder, Carex Morrowii Ice Dance, Hypericum Calycinum.

The living wall overlooks the New Street Station tracks at the Bullring end of Grand Central and faces towards Smallbrook Queensway. It then runs from the bottom of the Rotunda to a passageway that goes beneath Grand Central.

To read our full case study click [here](#)



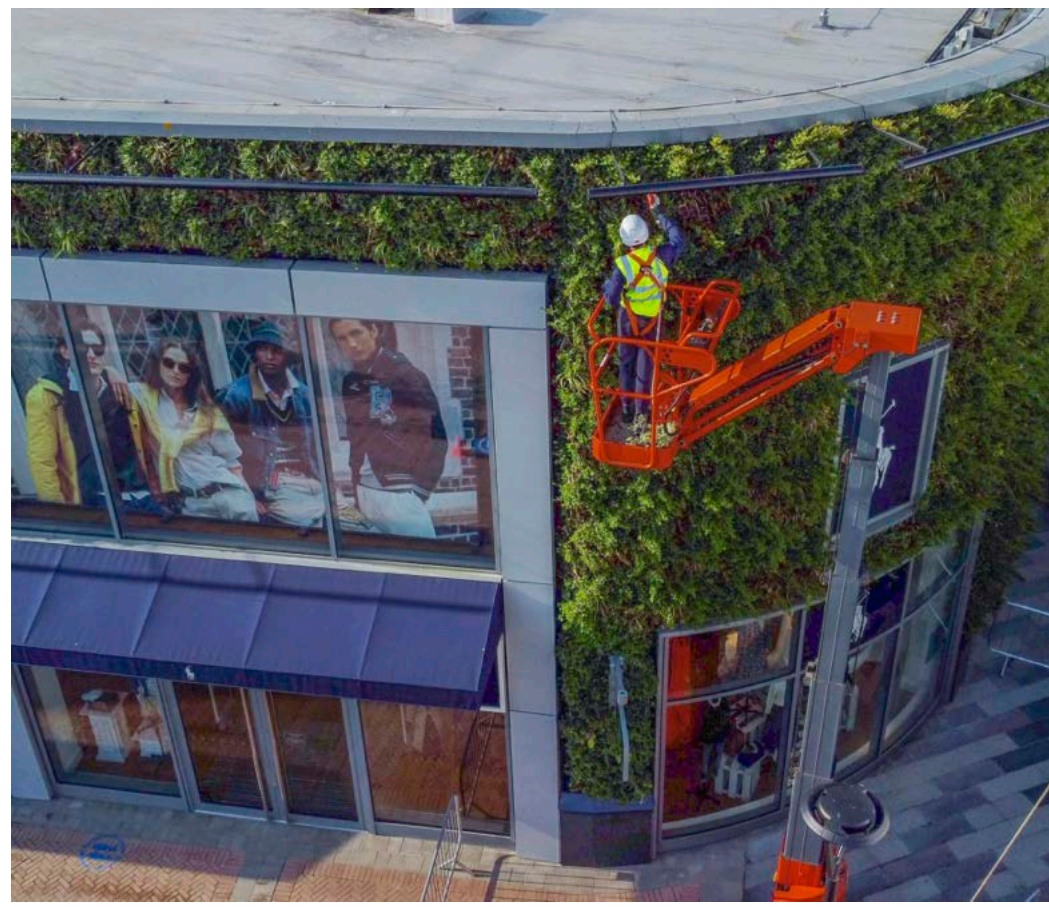
[← BACK TO NEWS](#)

RECENT NEWS



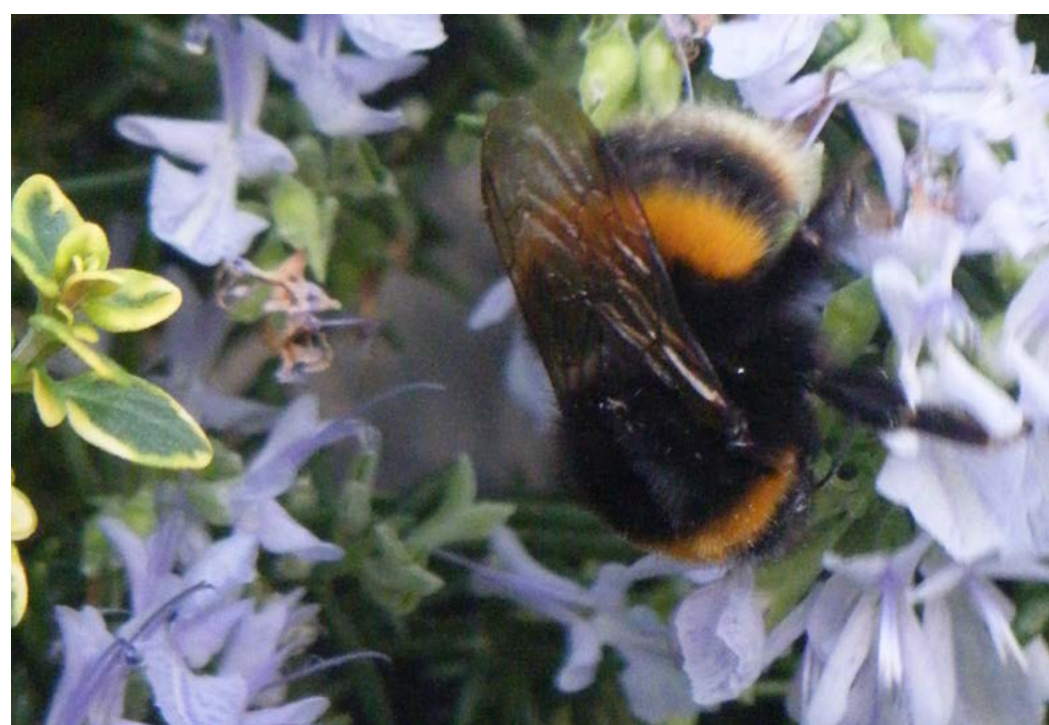
Embracing a Holistic Approach to Net Zero

6-12 July marked Net Zero Week, as we work to tackle carbon emissions we mustn't forget the vital role nature has to play



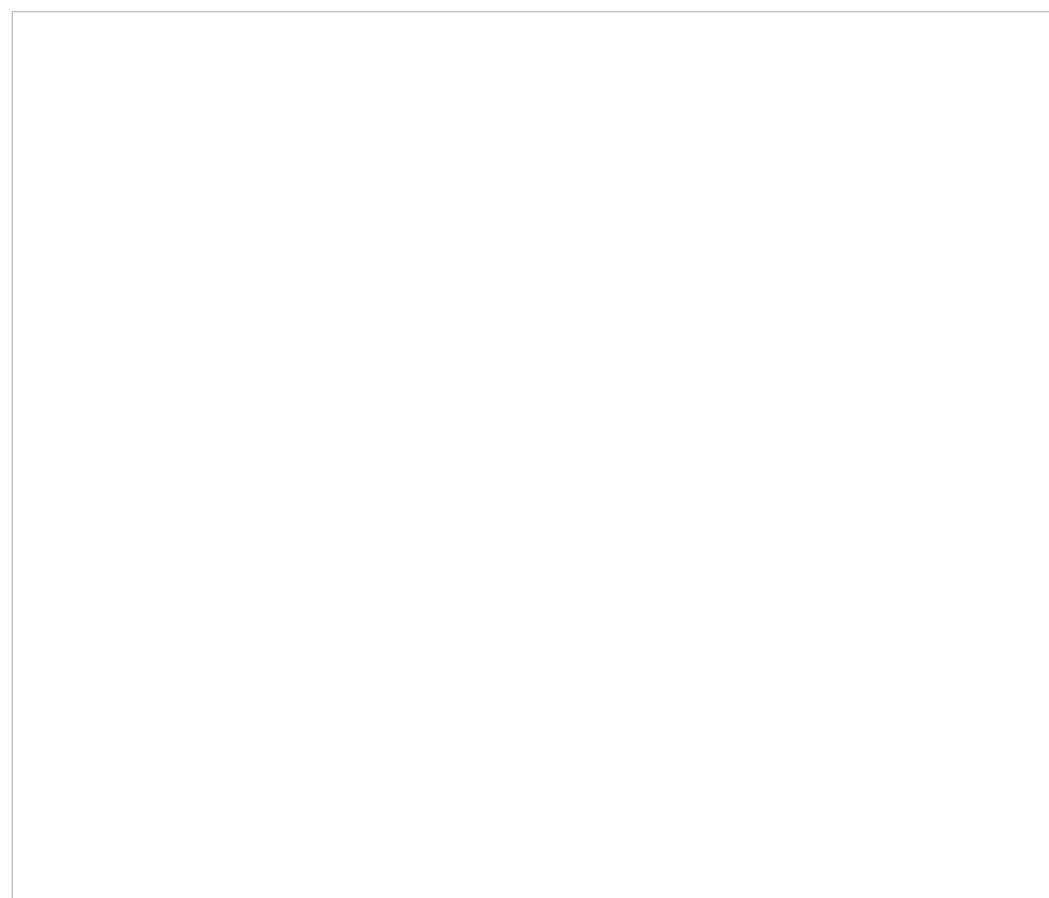
How We Keep Living Walls Thriving

Biotecture have been looking after living walls for 15 years. In this blog post, we'll explain what goes into keeping a green wall healthy longterm



Boosting Biodiversity: 7 Effective Strategies for Your Site

Discover how you can make a meaningful impact on local ecosystems with these seven actionable strategies to enhance biodiversity on your site



Biotecture Wins Industry Collaboration Award

Transformative partnership with Canary Wharf Group recognised by Pro Landscaper Business Awards judges.