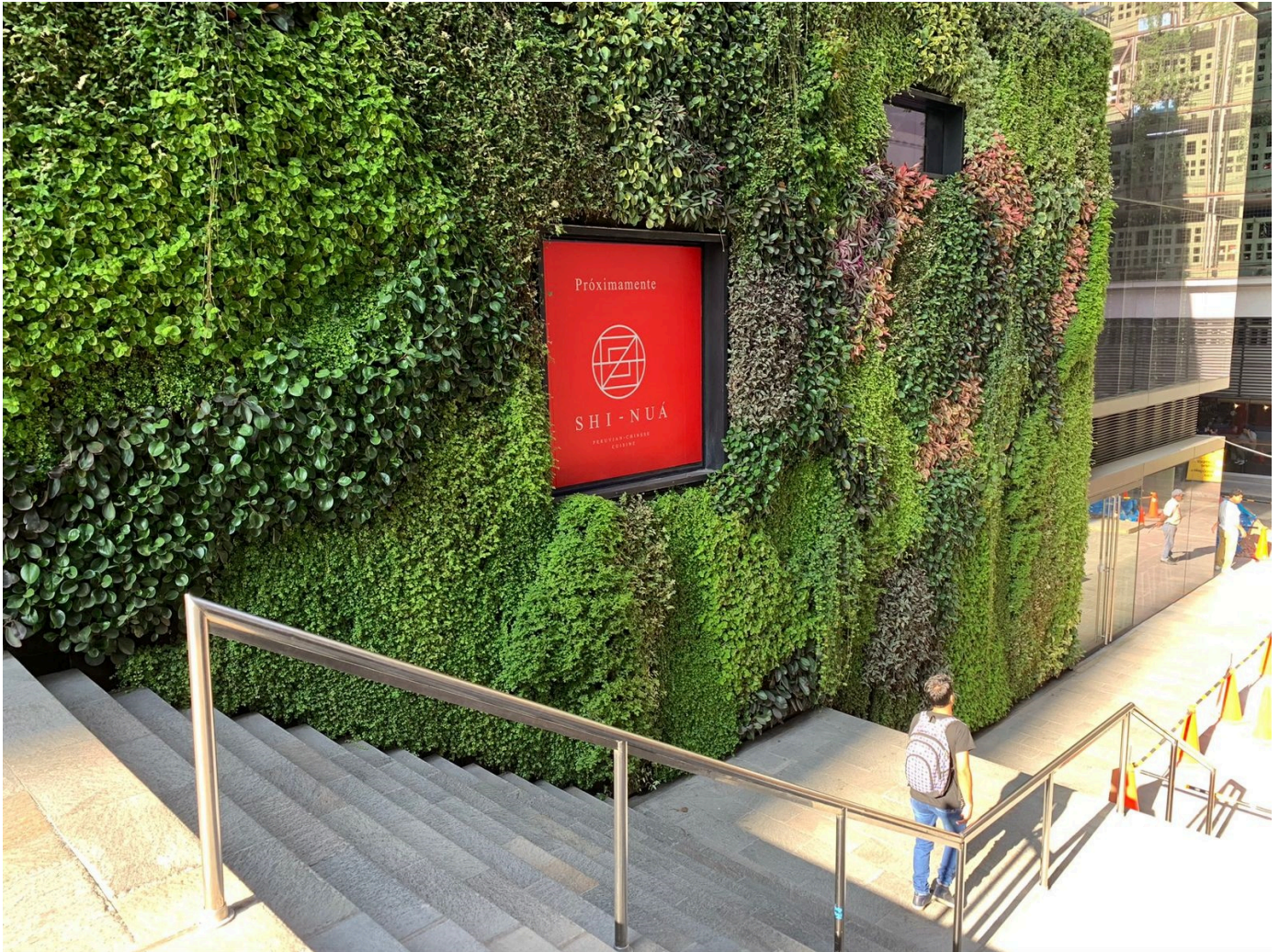
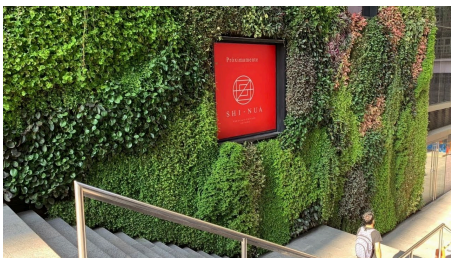




## REAL DOS LIVING WALLS



(<https://www.greenroofs.com/wp-content/uploads/2020/03/RealDos-LivingWalls-ARVEperu-1-1.jpg>)



(<https://www.greenroofs.com/wp-content/uploads/2020/03/RealDos-ARVEF>

(<https://www.greenroofs.com/wp-content/uploads/2020/03/RealDos-LivingWalls-ARVEperu-1-1.jpg>)

### ADDITIONAL RESOURCES

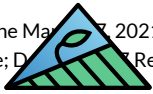
For more information on this project, contact ARVE Perú at: [info@arve.com.pe](mailto:info@arve.com.pe)

### CASE STUDIES

Ateliers Jean Nouvel (<http://www.jeannouvel.com/en/projects/lima-immeuble-de-bureaux-real-dos/>); Cushman & Wakefield (<https://cushwakeperu.com/propiedad/oficina-en-torre-real-2/>); PMS DRS Ingeniería y Gestión (<https://www.pms-drs.com.pe/proyecto/edificio-real-2/>).

## VIDEO

Watch the March 17, 2021 Video Real Dos Featured Project (<https://youtu.be/17By4tmX36>) from Greenroofs.com on the greenroofsTV channel on YouTube; Discover Real 2 - Lima, Perú (<https://youtu.be/D1MzF-p0roLX4>) by Grupo Centenario on YouTube.



## GREENROOFS.COM (/)

## NEWS

March 17, 2021 Featured Project: Real Dos (<https://www.greenroofs.com/2021/03/17/featured-project-real-dos/>) by Linda Velazquez in Greenroofs.com; 2019 Real 2 es seleccionado como el mejor edificio de oficinas de América Latina (<https://constructivo.com/actualidad/real-2-es-seleccionado-como-el-mejor-edificio-de-oficinas-de-america-latina-1523307189>) in Constructivo; March 22, 2018 Los nuevos iconos limeños de Jean Nouvel (<https://cosas.pe/casas/112776/los-nuevos-iconos-limenes-de-jean-nouvel/>) by Laura Alzubide in COSAS; February 28, 2018 Lima: a colorful building by Jean Nouvel ([https://www.constructioncayola.com/batiment/article/2018/02/28/117928/lima-immeuble-haut-couleur-signe-jean-nouvel?fbclid=IwAR3\\_97ogj1TGhhFvFcY9Y90qUWI3JrRK6PGLrG0Rf5NqXjV8W2soYksHFA4](https://www.constructioncayola.com/batiment/article/2018/02/28/117928/lima-immeuble-haut-couleur-signe-jean-nouvel?fbclid=IwAR3_97ogj1TGhhFvFcY9Y90qUWI3JrRK6PGLrG0Rf5NqXjV8W2soYksHFA4)) by La Rédaction in Construction Cayola; October 19, 2015 Inician obras de Real 2 en el Centro Empresarial Real de San Isidro (<https://revistaganamas.com.pe/inician-obras-de-real-2-en-el-centro-empresarial-real-de-san-isidro/>) by staff in Gan@Más.

Designed by Ateliers Jean Nouvel, the Pritzker Prize winner's first in Lima, Real Dos is a mixed-use commercial building of 24,000 square meters that brings together offices, restaurants and retail outlets. As part of the Centro Empresarial Real complex of approximately 7,000 m<sup>2</sup> of total leasable area distributed in nine buildings, the mid-rise Real Dos building is surrounded by other contemporary buildings.

Real Dos is a work of adaptation and uniqueness. Located in Lima's San Isidro district – the heart of commercial activity in Peru, the Real Dos tower is spread over 23 levels (14 floors and 9 basements) and enjoys the amenity of a verdant roof garden at the building's crown and many full-height exterior vertical gardens at its stepped ground level.

The building is linked to the formal diversity of the environment and is differentiated by its lightness and color. As is customary, Jean Nouvel studied the culture of the country, and in this case he was inspired by the lively colors of Peruvian handicraft fabrics. The result is a striking glass envelope covered with bright mobile multi-colored panels, which the architect says is “thereby revisiting the chromatic aesthetic of Peru.”

Along with its iconic glass facade with colorful movable blinds, Real Dos has four fronts designed for natural light, green walls on the three main fronts, and a garden roof.

Nine floors, or 8,500 square meters, are leased by the company WeWork, a world leader in shared work spaces.

Ateliers Jean Nouvel worked with ARVE Perú on the overall landscape plans of the Real Dos tower. Designed, installed, and maintained by ARVE Perú, approximately 13,000 plants representing over 20 species were planted on the Real Dos Living Walls.

The ARVE Vertical Garden system was used. Consisting of modular aluminum panels, they include pockets of a non-woven geotextile 030 and 040 with a controlled, automated irrigation system using 20 plants per square meter. ARVE was in charge of specifying the landscape proposal for Atelier Jean Nouvel, according to the available local plants in Lima. The landscape plan for Real Dos was beautiful because it was based on a diversity of colors and organic shapes.

Returning reflections of its own striking glass envelope covered with multi-colored panels inspired by Peru's rich textile history and beautiful vegetative surfaces onto its neighbors' glass-clad facades, the Real Dos is a plant oasis in the midst of commercial-area Lima.

See the Project Profile for the **Real Dos Roof Garden** (<https://www.greenroofs.com/projects/real-dos-roof-garden/>) in the Greenroofs.com Projects Database.



DISCOVER MORE COMMERCIAL PROJECTS  
 **GREENROOFS.COM (//)**

**14th & R**

Washington, DC, USA

(<https://www.greenroofs.com/projects/14th-r/>)

**Palazzo Park Hotel & Residences**

Manuel Antonio, Costa Rica

(<https://www.greenroofs.com/projects/palazzo-park-hotel-residences/>)

**Broom House Farm Coffee Shop**

Durham, England, UK

(<https://www.greenroofs.com/projects/broom-house-farm-coffee-shop/>)

**DETAILS**

**OWNER:**

INVERSIONES CENTENARIO

**YEAR:**

2018

**LOCATION:**

CENTRO EMPRESARIAL REAL, AV. VICTOR ANDRÉS BELAÚNDE 147, LIMA, DISTRITO DE SAN ISIDRO 15073, PERU

**SIZE:**

3,929 FT<sup>2</sup>

365 M<sup>2</sup>

**SLOPE:**

100%

**BUILDING PROGRAM:**

COMMERCIAL

**TYPE:**

LIVING WALL

**SYSTEM:**

SINGLE-SOURCE PROVIDER

TEST/RESEARCH  
NO



# GREENROOFS.COM (/)

ACCESS:  
ACCESSIBLE

PRIVACY:  
PUBLIC

PROFILE AUTHORS:  
VIVI MODONESE, ARVE PERÚ  
GREENROOFS.COM

LAST UPDATED:  
MARCH 18, 2021

## CREDITS

ARCHITECT:  
ATELIERS JEAN NOUVEL

ASSOCIATED ARCHITECT:  
ALBERTO MEDEM, HUMBOLDT ARQUITECTOS

LOCAL ARCHITECT:  
MIGUEL RODRIGO P.A. ARQUITECTOS

GENERAL CONTRACTOR:  
GRAÑA Y MONTERO

PROJECT MANAGEMENT AND CONSTRUCTION SUPERVISION:  
PMS DRS INGENIERÍA Y GESTIÓN

LANDSCAPE DESIGN:  
JEAN NOUVEL / ARVE PERÚ

LIVING WALL & GREENROOF DESIGN, CONSTRUCTION & MAINTENANCE:  
ARVE PERÚ

GREENWALL SYSTEM:  
ARVE VERTICAL GARDEN

## OUR SPONSORS



(<https://www.greenroofs.com/directory/air-pump-usa/>)



(<https://www.greenroofs.com/directory/american-hydrotech-inc/>)



(<https://www.greenroofs.com/directory/carlisle-syntec->

systems/)



**GREENROOFS.COM (/)**

**LiveRoof®**  
*The Proof is in the Roof*

(<https://www.greenroofs.com/directory/liveroof-global-llc/>)

**rooflite®**

*Certified Green Roof Media*

(<https://www.greenroofs.com/directory/rooflite/>)

## **GREENROOFS.COM**

CONNECTING THE PLANET + LIVING ARCHITECTURE

**(/)**

### COMPANY

Home (<https://www.greenroofs.com/>)

About Us (<https://www.greenroofs.com/about-us/>)

Contact Us (<https://www.greenroofs.com/contact-us/>)

Advertise (<https://www.greenroofs.com/advertise/>)

Terms of Use (<https://www.greenroofs.com/terms-of-use/>)

Privacy Policy (<https://www.greenroofs.com/privacy-policy/>)

### NEWS

Virtual Summit (<http://virtual.greenroofs.com/>)

Events (<http://www.greenroofs.com/events>)

Joblinks (<https://www.greenroofs.com/joblinks/>)

Videos (<http://www.greenroofs.com/videos/>)

News (<https://www.greenroofs.com/news/>)

FAQs (<https://www.greenroofs.com/faqs/>)

### RESOURCES

Projects (<https://www.greenroofs.com/projects/>)

Submit a Project (<https://www.greenroofs.com/submit-project/>)



# GREENROOFS.COM (/)

Directory (<https://www.greenroofs.com/directory/>)

Press Releases (<https://www.greenroofs.com/press-releases/>)

Bookstore (<https://www.greenroofs.com/bookstore/>)

Contribute (<https://www.greenroofs.com/contribute/>)

 (<https://twitter.com/greenroofs>)


 (<https://www.facebook.com/greenroofs/>)



(<https://www.linkedin.com/groups?gid=991987>) 

(<https://www.youtube.com/user/greenroofsTV>)

 ([https://visitor.constantcontact.com/d.jsp?](https://visitor.constantcontact.com/d.jsp?m=1098465456092&p=oi)

[m=1098465456092&p=oi](#))  (/feed/)

© 2024 Greenroofs.com, LLC. All rights reserved. Website redesign made possible with support from the **Legacy Emilio Ambasz Foundation (LEAf)**.