



MAAT, the most modern museum in Lisbon

MAAT – Museum of Art, Architecture and Technology is one of the most modern cultural proposals in the city of Lisbon. Let's get to know it?



VALTER LEANDRO- SENIOR EDITOR · MAY 25, 2022

SHARE THE ARTICLE



Photo by @rubenmneves

The Museum of Art, Architecture and Technology, better known by the abbreviation MAAT, is **one of the most modern museums in Lisbon**, where much of the contemporary art in the Portuguese capital is exhibited.

✳ [42 things to do, at least once in your life, in Lisbon](#)

entertain children... that
parents will also like

MAAT was opened in 2016, making it one of the city's newest cultural spaces. It is managed by the EDP Foundation and is an international institution that **promotes critical discourse and creative freedom**, in a mix of past, present and future.



MAAT is located along the riverfront of Belém | Photo by Sara Depraetere

equipment and the Central Tejo thermoelectric plant, **built in 1908**.

MAAT was designed by the London architecture studio AL_A (Amanda Levete Architects), responsible for **some of the most iconic architectural projects around the world**, of which our MAAT is clearly one of the most recognized.

In addition to the main building, **MAAT also has a garden that connects the infrastructures**, designed by landscape architect Vladimir Djurovic.

This greener area is approximately 225 metres long and has an average width of 100 metres, and **blends perfectly into the landscape**, with dense vegetation that helps reduce noise from road and rail traffic in this part of the city.



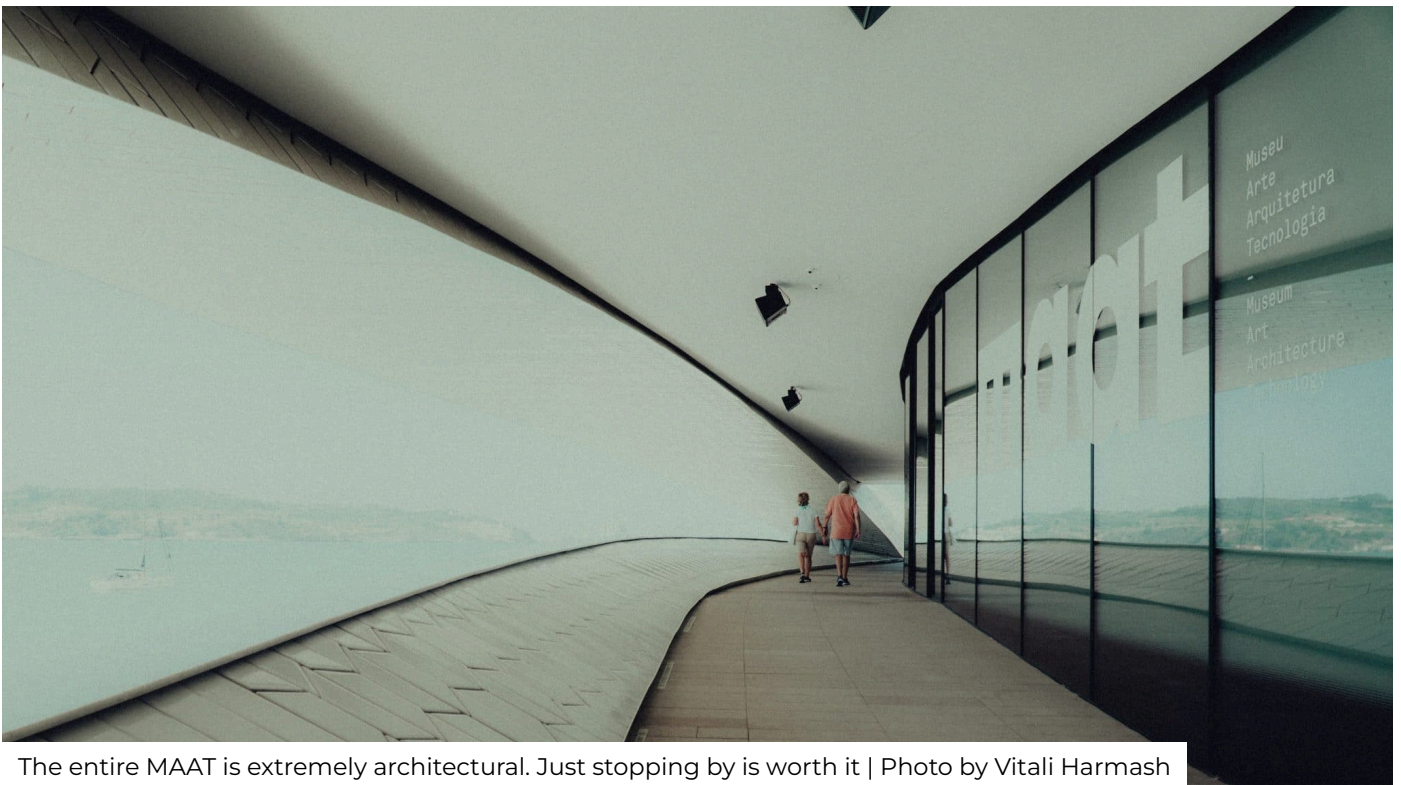
The gardens next to both buildings are perfectly aligned with the environment | Photo by FG + SG

The gardens, in addition to having leisure areas with rest areas, **also have two permanent installations**: “Placed on Either Side of the Light” (1999) by Lawrence Weiner and “Central Tejo” (2018) by Pedro Cabrita Reis, which are joined, temporarily, by **artistic interventions and public programs organized throughout the year**.

Art, Architecture and Technology

MAAT is divided into three areas: **imagination, through Art; where we live, through Architecture; and what we create, through Technology.**

All the contemporary exhibitions and shows that take place there are centred around these three axes. For example, **when it reopened on 5 April, three exhibitions were opened simultaneously.**



The entire MAAT is extremely architectural. Just stopping by is worth it | Photo by Vitali Harmash

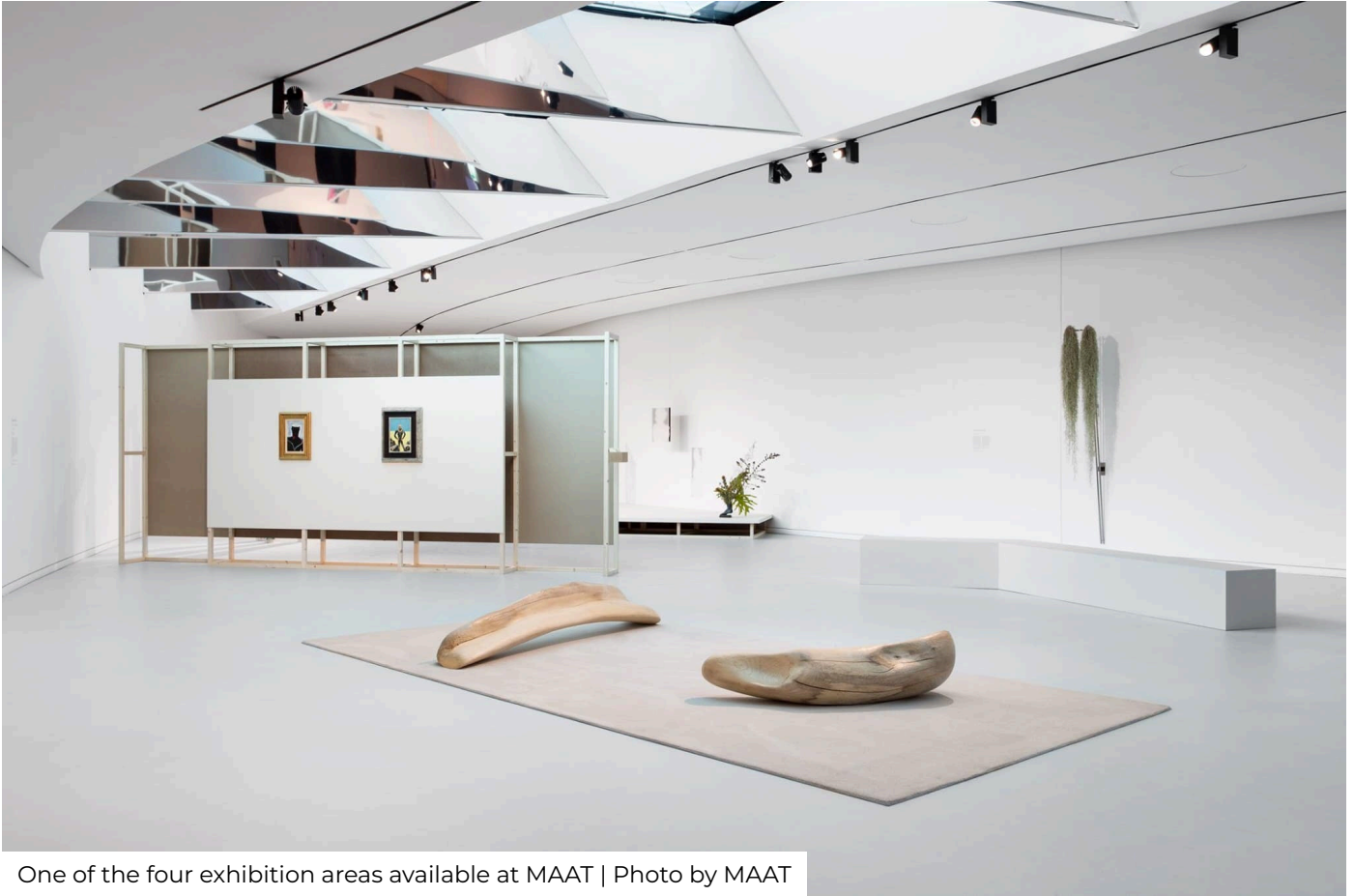
MAAT, inside

It is unparalleled from the outside, **but it is inside that its greatest manifestations take place**, i.e. exhibitions and other artistic events.

It has four spaces where various exhibitions take place throughout the year, totaling 3,000 square meters: **the Oval Gallery, the Main Gallery, the Video Room and the Project Room.**

In the first space, characterized by an interior curve, you can **stroll along a path where his most notable projects are exhibited.**

The main area, with 1,000 square meters, is located on the lower floor and **offers a lot of versatility, preparing to host any type of program.**



One of the four exhibition areas available at MAAT | Photo by MAAT

The spectacular MAAT viewpoint

Before we end this brief visit to MAAT, we couldn't fail to mention the **fabulous MAAT viewpoint**, with a **fantastic view of the Tagus**, and one of the **best places in Lisbon to watch the [sunset](#)**.



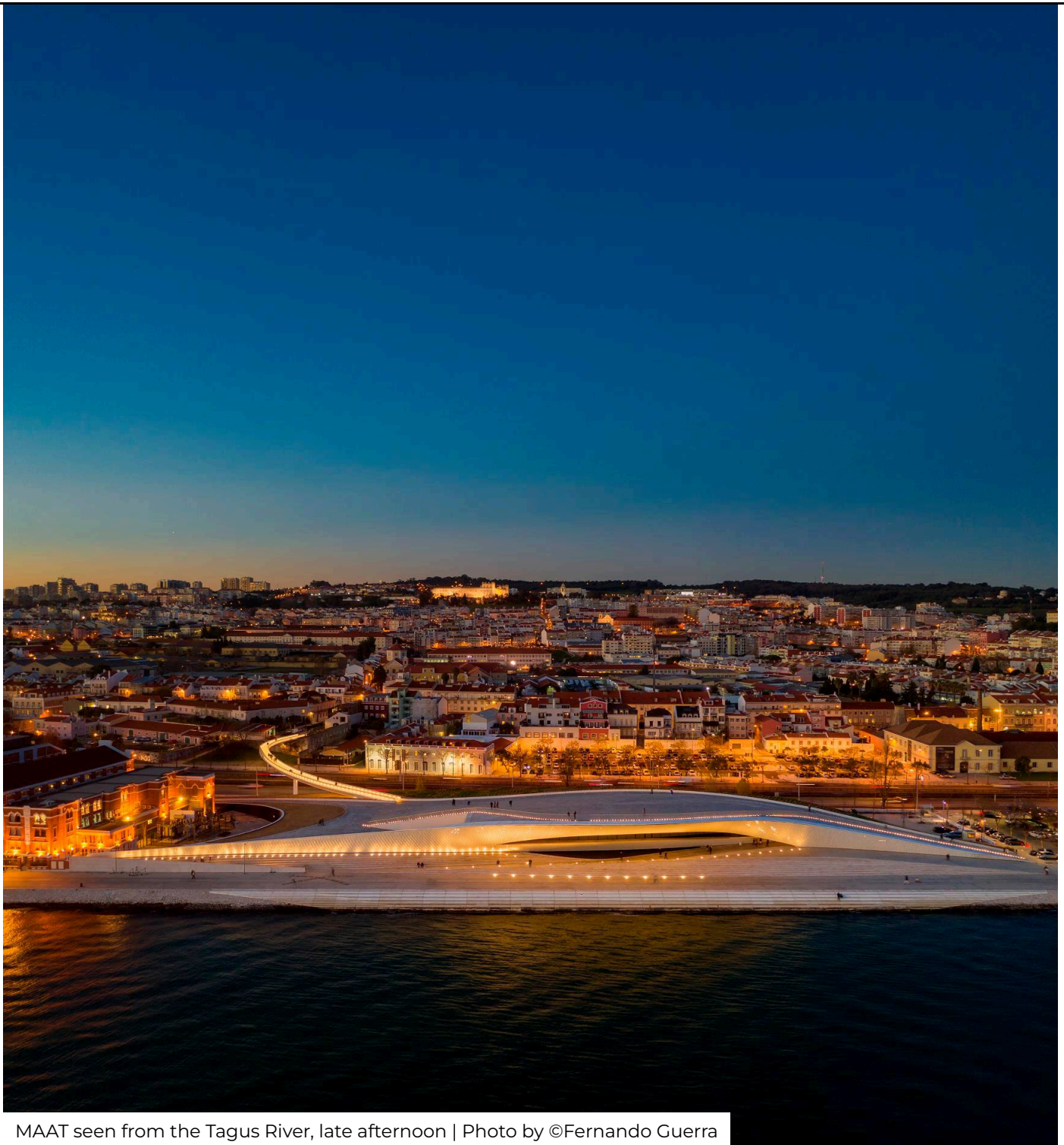
MAAT Viewpoint, a must-see



The MAAT viewpoint is already the scene of thousands of photographs on social media | Photo by Madalena Veloso Magda Ehlers



This photo was taken before the pandemic, with many people eager to see the viewpoint | Photo by @amandalevetearchitects

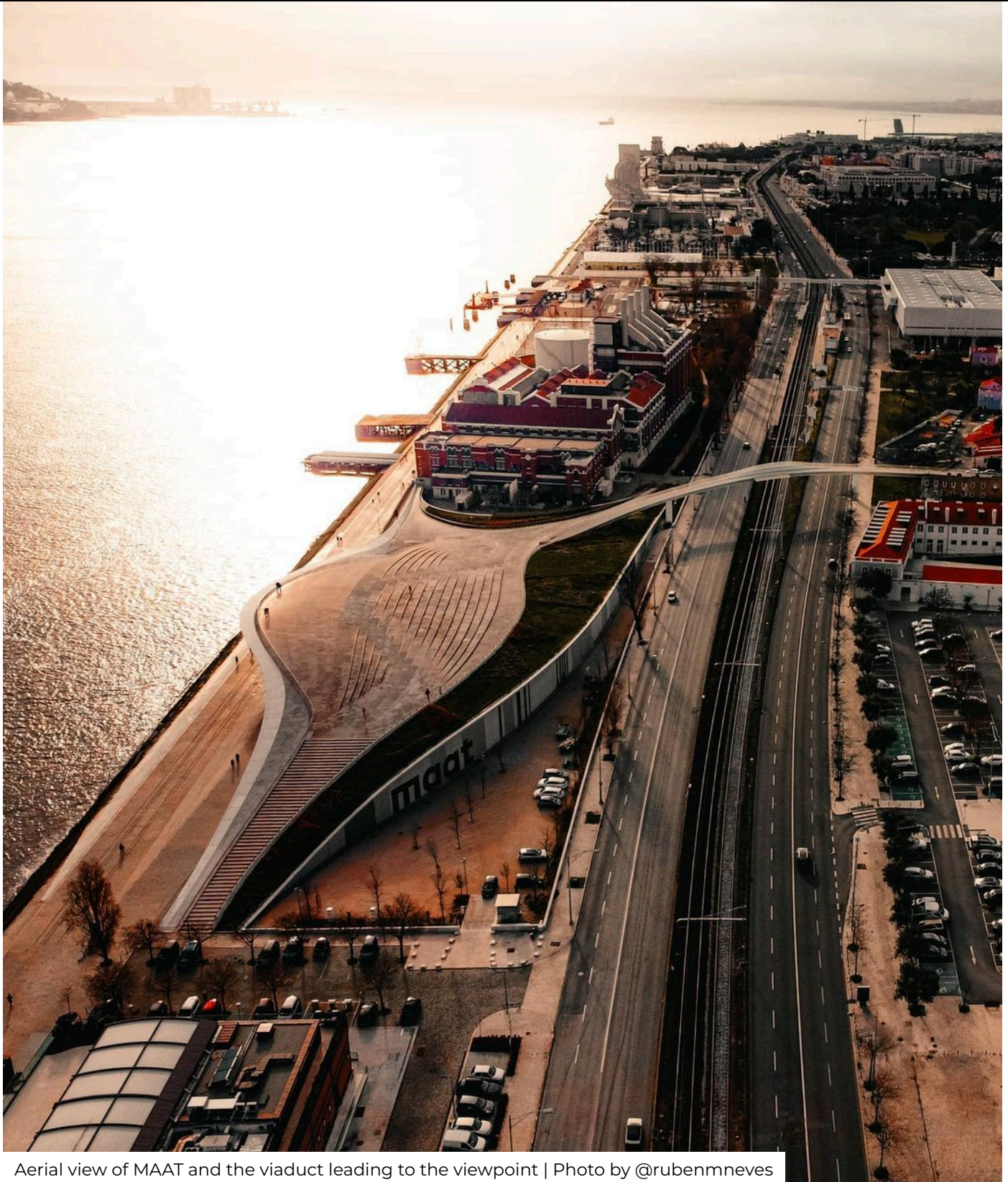


MAAT seen from the Tagus River, late afternoon | Photo by ©Fernando Guerra

The viaduct that takes you to this viewpoint is also **a spectacular work of engineering.**

It was also designed by British architect Amanda Levete and passes over Avenida da Índia and the railway line to **allow access to the museum's roof, also facilitating access to the Cordoaria Nacional parking lot.**

It is 123.7 meters long and **includes a pedestrian deck and a cycle path,** and is available 24 hours a day.



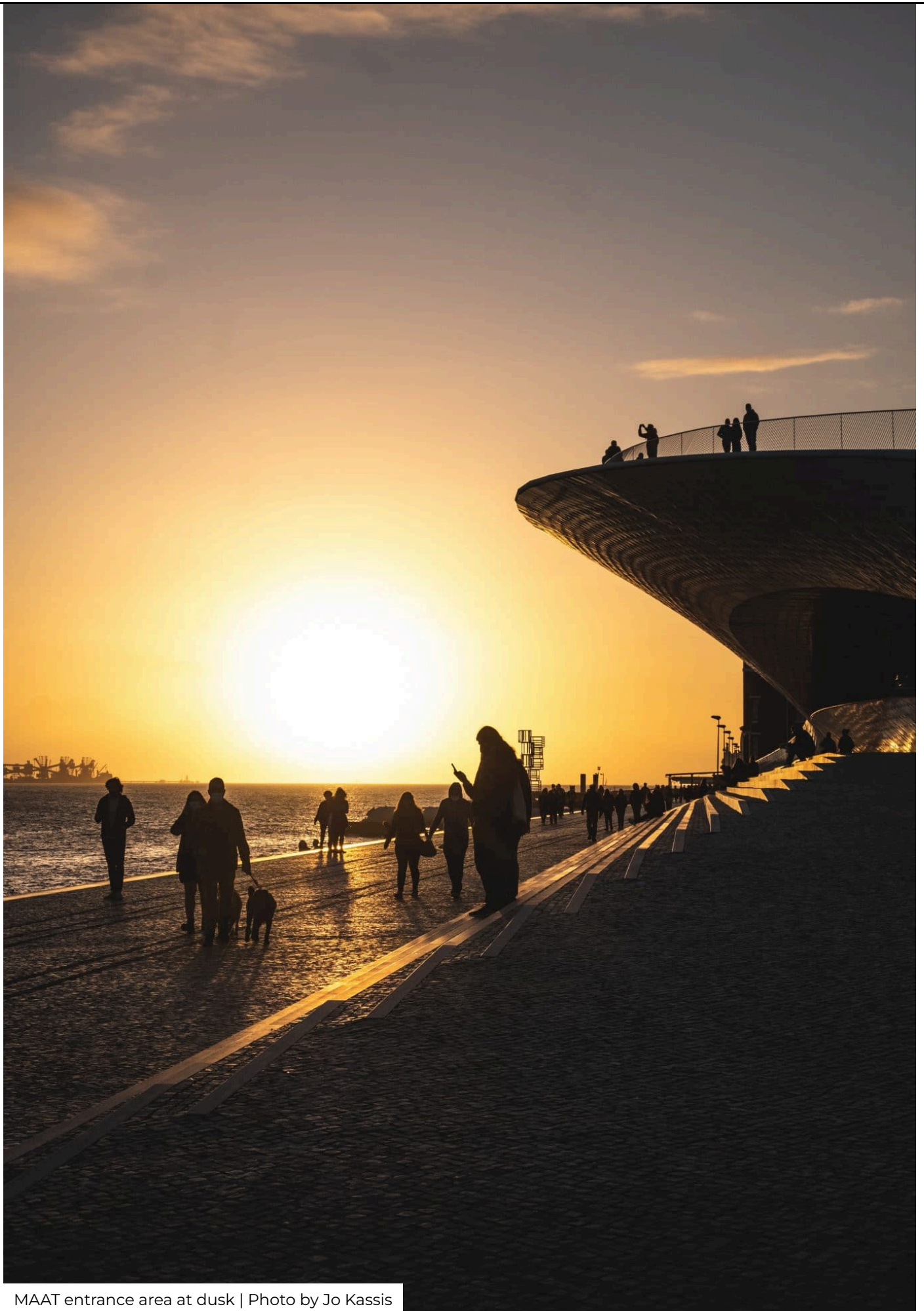
Aerial view of MAAT and the viaduct leading to the viewpoint | Photo by @rubenmneves

Oh, that's right! Did you know that MAAT already won a [photography competition in 2019?](#)

Near MAAT



Near the MAAT there are other very interesting places to visit. Right next door is the Electricity Museum (Central Tejo) and, following the entire waterfront towards the sea, you will also find the Belém Cultural Centre, **the [Jerónimos Monastery](#) (don't miss the custard tarts nearby), the [Belém Tower](#) and the [Padrão dos Descobrimentos](#),** among other fantastic places that we invite you to visit.



MAAT entrance area at dusk | Photo by Jo Kassis

Do you want to know our favorite museums in Lisbon?

Museus em Lisboa: os nossos preferidos



Adoramos todos os museus em Lisboa e, se pudéssemos, a nossa vida seria passada dentro das quatro paredes de um destes espaços, qualquer um, principalmente se estivesse nesta nossa lista de preferências. Adoramos estes

lugares de conhecimento, que nos contam histórias e nos levam a viajar, a maior parte das vezes, ao passado. Por não ... Continue a ler



SHARE THE ARTICLE

Tags: [Exhibition](#) , [art gallery / museum](#)

CULTURE WHAT TO DO

GO UP ↑

[About Secret Lisbon](#) [Advertise with us](#) [Promote your event](#) [Privacy Policy](#) [Contact](#)