



PEP Focuses on the Health of Mobile Bay with New Partnership!

The Eagle Reef is a solution for the loss of natural oyster and grass beds, which has contributed to the reduction of numerous fish species.

Sign up for an Eagle Reef or Make a Donation

ABOUT

PEP has been an advocate for environmental stewardship and best practices for decades. We have now added local partners who can actively improve the quality of our waters and fisheries through The Eagle Reef project. The Eagle Reef began as an Eagle Scout service project conducted by John Shell. The project's goal: restoring and revitalizing our marine and coastal ecosystems by deploying mini reefs across Coastal Alabama. The Eagle Reef was inspired by the loss of natural oyster and grass beds, which is contributing to the reduction of numerous fish species and habitats.



0:00 / 0:06



HOW IT WORKS

The Eagle Reef project helps restore the health of our coastal waters for all to enjoy! In the first six months after installation, the reefs are loaded with filter feeders including oysters and barnacles, filtering and cleaning more than 7.3 million gallons of water annually and attracting fish to the waters surrounding the reefs. In addition, the reefs provide habitats that generate thousands of fish and crabs per year. Each reef comes preassembled, tied between four pilings under a dock or wharf and floats up and down with the tide.

THE FUTURE OF EAGLE REEF

Partners for Environmental Progress (PEP) and the University of South Alabama Stokes School of Marine and Environmental Sciences are partnering with The Eagle Reef to expand the project to deploy **1,000 reefs**, which will filter up to **7.3 billion gallons** of water annually and create habitats that result in thousands of fish and crabs per year in our coastal waters. [Check out our list of what fish you can find at your dock!](#)

The University of South Alabama Stokes School of Marine and Environmental Sciences will assist in location identification, deployment, stocking and maintaining the reefs for the project in addition to monitoring the reefs and testing the waters surrounding them.

PEP is rallying its membership to raise funds and awareness for cleaning the coastal waters and improving the fish populations for area residents and visitors.

CLICK TO VIEW THE CURRENT EAGLE REEF LOCATIONS



Partners For Environmental Progress

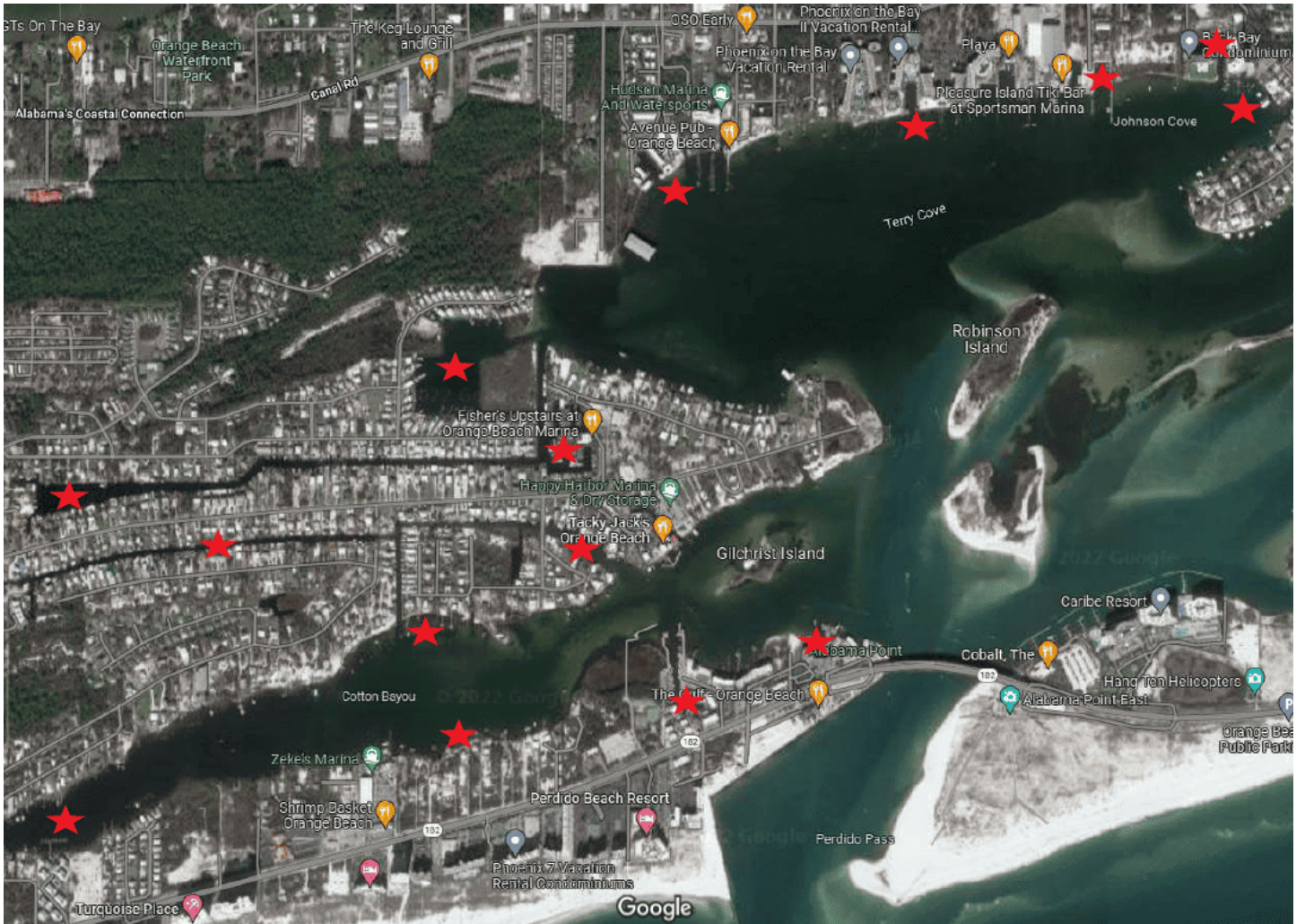


**Stokes School of Marine &
Environmental Sciences**



UNIVERSITY OF
SOUTH ALABAMA





WHERE WILL THE REEFS BE INSTALLED?

- The reefs will be installed under the wharfs and docks of private individuals, marinas, restaurants and other structures in Mobile and Baldwin counties.
- If needed, the reefs can be seeded with oysters to help reestablish the oyster population in various locations.

FAST FACTS

- The Eagle Reef filters water, attracting small crabs, shrimp and larger game fish, and serves as a refuge for small fish.
- The filter feeders on the reef sequester nutrients in the water and inhibit the growth of algae.
- Each reef can filter up to 20,000 gallons of water per day and 7.3 million gallons annually.

YOU CAN HELP!

Eagle Reefs are available for businesses, nonprofits and individuals to purchase, or they may be adopted through donations. For more information on how to get involved or to make a tax deductible donation, complete our Eagle Reef Interest Form.

[Complete the Eagle Reef Interest Form or Make a Donation](#)

THANK YOU TO OUR SPONSORS FOR SUPPORTING THE EAGLE REEF & THE PEP GULF COAST ENVIRONMENTAL FOUNDATION!

Clean Water Champions

40 Reefs Subsidized, 292 million gallons of water filtered annually



**AM/NS
CALVERT**



Clean Water Protectors

20 Reefs Subsidized, 146 million gallons of water filtered annually



Project C.A.T.E Foundation

Clean Water Advocates

10 Reefs Subsidized, 73 million gallons of water filtered annually



**High-Purity Silicon
America Corporation**

Clean Water Patrons

4 Reefs Subsidized, 29 million gallons of water filtered annually



Clean Water Donors



754 Downtowner Loop West, Mobile, Alabama 36609 | 251.345.7269 | director@pepmobile.org